



NICEVILLE HOME CONNECTION

*Your LOCAL Home Town Connection
For All Things Real Estate*



Second Edition

February 2016

Volume 5

Spread The Love!

Romance and real estate really do go together. Think about this! Just like dating, when you hunt for houses, you evaluate every home or piece of property for its compatibility, allure and good looks. You ask yourself if your heart flutters or sparks fly when you think about it. If the answer is a resounding 'yes', it is only then that you can make a full commitment to love, honor and care for that house. Then it is easy to turn that house into a home filled with love, memories and the people you care the most about. After all, Cupid has a home too and it could just be in Niceville. Remember, home is where the heart is!

The Numbers For Niceville

	Homes Sold 2015	Homes Sold 2016
January	34	35
February		
March		
April		
May		
June		
July		
August		
September		
October		
November		
December		
TOTAL		

Did You Know?

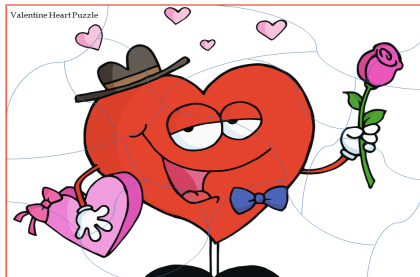
On Valentines Day 1779 the great explorer Capt. James Cook was murdered in Hawaii.

Alexander Graham Bell applied for the phone patent on Valentines' Day 1876.

110 Million Red Roses Will be delivered on Valentine's Day!

On Valentines Day 1929 Sr. Alexander Fleming introduced penicillin to the world.

This year 15 couples will say "I Do" on top of the Empire State Building on Feb. 14th



Guessing Game!

Tell Us Where The Picture Above was taken & if you are one of the first 3 - win a prize!

GAINESVILLE, Fla. – Jan. 29, 2016 – Consumer sentiment among Floridians fell a very slight amount in January, dropping to 91.5 from December's 91.6, according to the latest University of Florida (UF) consumer survey.

"Despite the positive trends in the labor market, the decline in Floridians' consumer sentiment, in particular the decline in the short- and long-run expectations on U.S. economic conditions, might be due to the drop in the stock market this year combined with the deterioration of the Chinese economy," says Hector H. Sandoval, director of the Economic Analysis Program at UF's Bureau of Economic and Business Research. "On one hand, if the turmoil in the stock market persists, this will reduce consumer spending in the medium-run; on the other, job losses might occur as a consequence of China's slowdown."

Conducted Jan. 1-24, the UF study reflects the responses of 427 individuals who were reached on cellphones, representing a demographic cross section of Florida.



www.NicevilleHomeConnection.com

kW
KELLER WILLIAMS

Janice Busovne

Broker Associate ■ REALTOR

850-598-9497

Janice@NicevilleHomeConnection.com

Each Office Is Independently Owned and Operated

4534 Hwy 20 East ■ Niceville ■ Florida 32578